

000174





180°转篮 180° Revolving Basket	8
360°转篮 360° Revolving Basket	9
四开大怪物 Soft-stop Pantry Unit	10
中怪物 Soft-stop Tandem Pantry Unit	11~12
高深篮 Tall Unit Basket	13~17
板式拉篮 Pull out Board Basket	18~20
多功能拉篮 Multi-purpose Basket	21~26
面包篮 Pull out Bread Basket	27
简易拉篮 Simple Basket	28~31
四边篮 Four-side Basket	32~34
三边篮 Three-side Basket	35~38
水槽篮 Trough Basket	38~39
侧式拉篮 Side Pull Out Basket	40~42
上移门铰 Upright Lift Fitting	43~44
升降台铰 Swivel Fittings	45
升降篮 Pull down basket	46
不锈钢碗碟架 S.S Draining Racks	47
台式碗碟篮 Desk-Type Basket	48
挂件 Simple Racks	49~52
垃圾桶 Waste bin	53~55
证书 Certificate	56

## ■ Soft-stop Magic Corner / 全拉出重型小怪物 (不分左右)



Item No.	Material	Surface Treatment	Specification D*W*H(mm)	Cabinet(mm)	CBM(1SET/M3)
型号	材质	表面处理	规格	柜体	体积
TR-90F	195/201/304	CP/EL/NM/TH	485*660*590	900	0.078
TR-100F	195/201/304	CP/EL/NM/TH	585*660*590	1000	0.09

Iron 铁-195 Stainless steel 不锈钢-201/304 Chrome 电镀-CP electrolysis 电解-EL  
Nano plating 纳米干镀-NM powder coating:dark grey 碳灰-TH

## ■ Soft-stop Magic Corner / 重型小怪物 (不分左右)



Item No.	Material	Surface Treatment	Specification D*W*H(mm)	Cabinet(mm)	CBM(1SET/M3)
型号	材质	表面处理	规格	柜体	体积
TR-90E	195/201/304	CP/EL/NM/TH	485*660*590	900	0.078
TR-100E	195/201/304	CP/EL/NM/TH	585*660*590	1000	0.09
TR-120E	195/201/304	CP/EL/NM/TH	785*660*590	1200	0.09

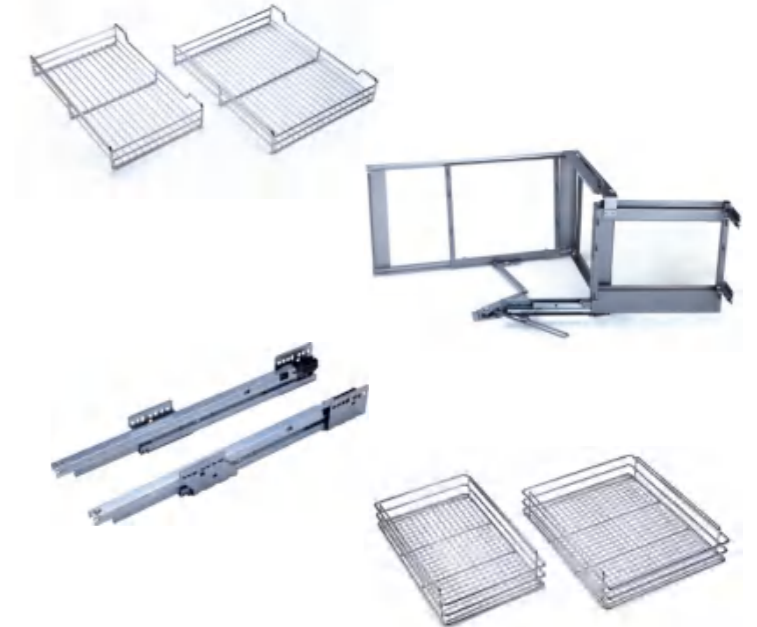
Iron 铁-195 Stainless steel 不锈钢-201/304 Chrome 电镀-CP electrolysis 电解-EL  
Nano plating 纳米干镀-NM powder coating:dark grey 碳灰-TH

## ■ Soft-stop GRASS Magic Corner / GRASS小怪物



Item No.	Material	Surface Treatment	Specification D*W*H(mm)	Cabinet(mm)	CBM(1SET/M3)
型号	材质	表面处理	规格	柜体	体积
GR-90A(L/R)	195/201/304	CP/EL/NM/TH	498*860*516	900	0.108

Iron 铁-195 Stainless steel 不锈钢-201/304 Chrome 电镀-CP electrolysis 电解-EL  
Nano plating 纳米干镀-NM powder coating:dark grey 碳灰-TH



Item No.	Material	Surface Treatment	Specification D*W*H(mm)	Cabinet(mm)	CBM(1SET/M3)
型号	材质	表面处理	规格	柜体	体积
GR-90D(L/R)	195/201/304	CP/EL/NM/TH	498*860*516	900	0.108

Iron 铁-195 Stainless steel 不锈钢-201/304 Chrome 电镀-CP electrolysis 电解-EL  
Nano plating 纳米干镀-NM powder coating:dark grey 碳灰-TH

## ■ Soft-stop Grass Board Magic Corner / 板篮式小怪物



Item No.	Material	Surface Treatment	Specification D*W*H(mm)	Cabinet(mm)	CBM(1SET/M3)
型号	材质	表面处理	规格	柜体	体积
GSR-90A(L/R)	195/201	CP/EL/NM/TH	498*860*530	900	0.11
WSR-90A(L/R)	195/201	CP/EL/NM/TH	498*860*530	900	0.11

Iron 铁-195 Stainless steel 不锈钢-201 Chrome 电镀-CP electrolysis 电解-EL  
Nano plating 纳米干镀-NM powder coating:dark grey 碳灰-TH

## ■ Soft-stop Magic Corner / 小怪物



Item No.	Material	Surface Treatment	Specification D*W*H(mm)	Cabinet(mm)	CBM(1SET/M3)
型号	材质	表面处理	规格	柜体	体积
TR-90A(L/R)	195/201/304	CP/EL/NM/TH	498*860*530	900	0.108

Iron 铁-195 Stainless steel 不锈钢-201/304 Chrome 电镀-CP electrolysis电解-EL Nano plating 纳米干镀-NM powder coating:dark grey 碳灰-TH



Item No.	Material	Surface Treatment	Specification D*W*H(mm)	Cabinet(mm)	CBM(1SET/M3)
型号	材质	表面处理	规格	柜体	体积
TR-90D(L/R)	195/201/304	CP/EL/NM/TH	498*860*530	900	0.108

Iron 铁-195 Stainless steel 不锈钢-201/304 Chrome 电镀-CP electrolysis电解-EL Nano plating 纳米干镀-NM powder coating:dark grey 碳灰-TH

## ■ Soft-stop Board Magic Corner / 板篮式小怪物



Item No.	Material	Surface Treatment	Specification D*W*H(mm)	Cabinet(mm)	CBM(1SET/M3)
型号	材质	表面处理	规格	柜体	体积
GS-90A(L/R)	195/201	CP/EL/NM/TH	498*860*530	900	0.11
WS-90A(L/R)	195/201	CP/EL/NM/TH	498*860*530	900	0.11

Iron 铁-195 Stainless steel 不锈钢-201 Chrome 电镀-CP electrolysis电解-EL Nano plating 纳米干镀-NM powder coating:dark grey 碳灰-TH

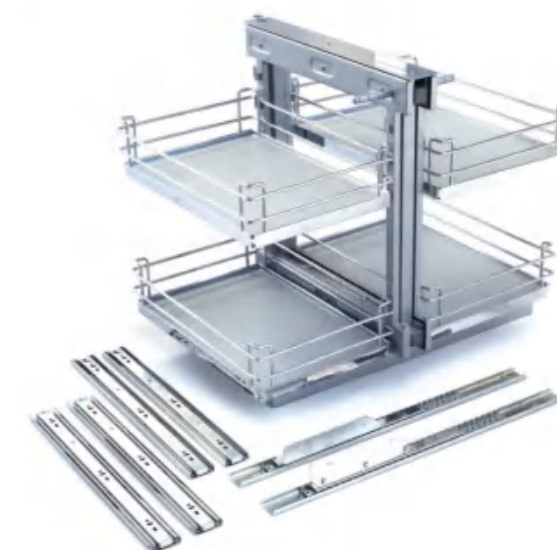
## ■ Full Extension Magic corner / 全拉出小怪物 (不分左右)



Item No.	Material	Surface Treatment	Specification D*W*H(mm)	Cabinet(mm)	CBM(1SET/M3)
型号	材质	表面处理	规格	柜体	体积
TR-90C	195/201/304	CP/EL/NM/TH	498*860*516	900	0.108

Iron 铁-195 Stainless steel 不锈钢-201/304 Chrome 电镀-CP electrolysis电解-EL Nano plating 纳米干镀-NM powder coating:dark grey 碳灰-TH

## ■ Full Extension Anti-slip Board Magic Corner / 全拉出板篮式小怪物 (不分左右)



Item No.	Material	Surface Treatment	Specification D*W*H(mm)	Cabinet(mm)	CBM(1SET/M3)
型号	材质	表面处理	规格	柜体	体积
GS-90C	195	CP/EL/NM/TH	498*860*590	900	0.078

Iron 铁-195 Chrome 电镀-CP Nano plating 纳米干镀-NM powder coating:dark grey 碳灰-TH

## ■ Soft-stop Metal Plate Magic Corner / 小怪物



Item No.	Material	Surface Treatment	Cabinet (mm)	Specification D*W*H(mm)	CBM (1SET/M3)
型号	材质	表面处理	柜体	规格	体积
TVR-90E	195	NM/TH	900	498x860x530	0.108

Iron 铁-195 Nano plating 纳米干镀-NM powder coating:dark grey 碳灰-TH

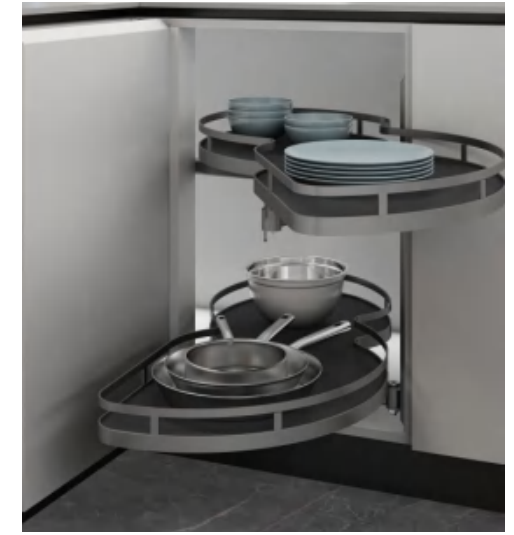
## ■ Full Extension Metal Plate Magic corner / 全拉出小怪物 (不分左右)



Item No.	Material	Surface Treatment	Cabinet (mm)	Specification D*W*H(mm)	CBM (1SET/M3)
型号	材质	表面处理	柜体	规格	体积
TVR-90F	195	NM/TH	900	480x660x590	0.078

Iron 铁-195 Nano plating 纳米干镀-NM powder coating:dark grey 碳灰-TH

## ■ Soft-stop Swing Trays / 双层飞碟



Item No.	Material	Surface Treatment	Specification D*W*H(mm)	Cabinet(mm)	CBM(1SET/M3)
型号	材质	表面处理	规格	柜体	体积
GS180A-800(L/R)	195	CP/NM/TH	725*370*600	800	0.083
WS180A-800(L/R)	195	CP/NM/TH	725*370*600	800	0.083
GS180A-900(L/R)	195	CP/NM/TH	825*370*600	900	0.083
WS180A-900(L/R)	195	CP/NM/TH	825*370*600	900	0.083
GS180A-1000(L/R)	195	CP/NM/TH	925*370*600	1000	0.103
WS180A-1000(L/R)	195	CP/NM/TH	925*370*600	1000	0.103
GS180B-800(L/R)	195	CP/NM/TH	725*370*600	800	0.083
WS180B-800(L/R)	195	CP/NM/TH	725*370*600	800	0.083
GS180B-900(L/R)	195	CP/NM/TH	825*370*600	900	0.083
WS180B-900(L/R)	195	CP/NM/TH	825*370*600	900	0.083
GS180B-1000(L/R)	195	CP/NM/TH	925*370*600	1000	0.103
WS180B-1000(L/R)	195	CP/NM/TH	925*370*600	1000	0.103

A:Round upper wire 上框线-圆线 B:Flat upper wire 上框线-扁铁

Iron 铁-195 Chrome 电镀-CP Nano plating 纳米干镀-NM powder coating:dark grey 碳灰-TH

## ■ Soft-stop Swing Trays / 双层飞碟



Item No.	Material	Surface Treatment	Specification D*W*H(mm)	Cabinet(mm)	CBM(1SET/M3)
型号	材质	表面处理	规格	柜体	体积
GS180B-1200(L/R)	195	CP/EL/NM/TH	925*390*600	1200	0.11
WS180B-1200(L/R)	195	CP/EL/NM/TH	925*390*600	1200	0.11

Iron 铁-195 Chrome 电镀-CP Nano plating 纳米干镀-NM powder coating:dark grey 碳灰-TH

■ 270° Revolving Magic Corner / 270°旋转小怪物篮



Item No.	Material	Surface Treatment	Specification D*W*H(mm)	Cabinet(mm)	CBM(1SET/M3)
型号	材质	表面处理	规格	柜体	体积
TR-270G	195/201/304	CP/EL/NM/TH	800*H(640-750)	900	0.161

Iron 铁-195 Stainless steel 不锈钢-201/304 Chrome 电镀-CP Nano plating 纳米干镀-NM powder coating:dark grey 碳灰-TH

■ 270° Board Revolving Basket / 270°板式转篮



Item No.	Material	Surface Treatment	Specification D*W*H(mm)	Cabinet (mm)	CBM (1SET/M3)
型号	材质	表面处理	规格	柜体	体积
GS-270A	195	CP/NM/TH	710*H(565-790)	800	0.073

Iron 铁-195 Chrome 电镀-CP Nano plating 纳米干镀-NM powder coating:dark grey 碳灰-TH

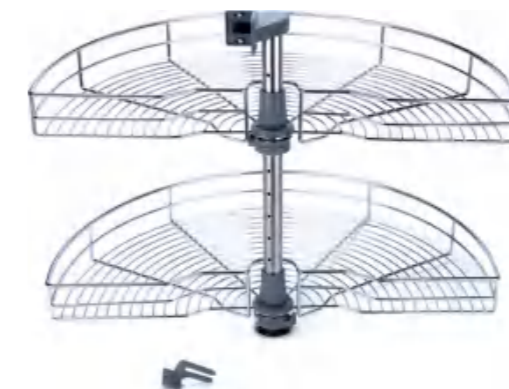
■ 270° Revolving Basket / 270°转篮



Item No.	Material	Surface Treatment	Specification D*W*H(mm)	Cabinet (mm)	CBM (1SET/M3)
型号	材质	表面处理	规格	柜体	体积
TR-270A	195/201/304	CP/EL/NM/TH	710*H(565-790)	800	0.073
TR-270B	195/201/304	CP/EL/NM/TH	800*H(565-790)	900	0.092
TR-270C	195/201/304	CP/EL/NM/TH	600*H(565-790)	700	0.052

Iron 铁-195 Stainless steel 不锈钢-201/304 Chrome 电镀-CP electrolysis 电解-EL Nano plating 纳米干镀-NM powder coating:dark grey 碳灰-TH

■ 180° Revolving Basket / 180°转篮



Item No.	Material	Surface Treatment	Specification D*W*H(mm)	Cabinet(mm)	CBM(1SET/M3)
型号	材质	表面处理	规格	柜体	体积
TR-180A	195/201/304	CP/EL/NM/TH	745*565	800	0.053
TR-180C	195/201/304	CP/EL/NM/TH	680*565	750	0.045

Iron 铁-195 Stainless steel 不锈钢-201/304 Chrome 电镀-CP electrolysis 电解-EL Nano plating 纳米干镀-NM powder coating:dark grey 碳灰-TH

## ■ 360° Revolving Basket / 360°转篮



Item No.	Material	Surface Treatment	Specification D*W*H(mm)	Cabinet(mm)	CBM(1SET/M3)
型号	材质	表面处理	规格	柜体	体积
TR-360A	195/201/304	CP/EL/NM/TH	φ710*H(565-790)	800	0.087
TR-360B	195/201/304	CP/EL/NM/TH	φ820*H(565-790)	900	0.136
TR-360C	195/201/304	CP/EL/NM/TH	φ450*H(565-790)	550	0.041
TR-360D	195/201/304	CP/EL/NM/TH	φ500*H(565-790)	600	0.051
TR-360E	195/201/304	CP/EL/NM/TH	φ540*H(565-790)	650	0.059
TR-360F	195/201/304	CP/EL/NM/TH	φ600*H(565-790)	700	0.063

Iron 铁-195 Stainless steel 不锈钢-201/304 Chrome 电镀-CP electrolysis 电解-EL powder coating:dark grey 碳灰-TH

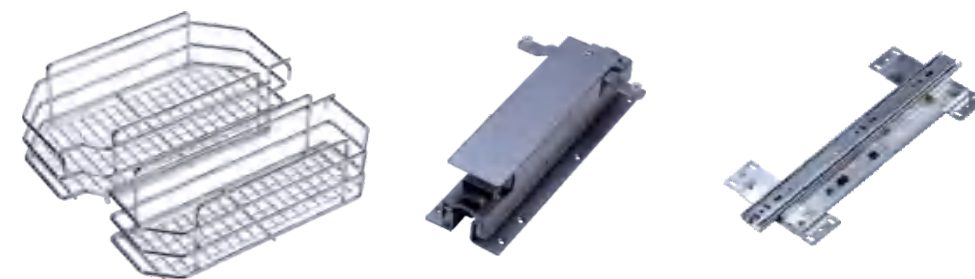
## ■ 360° Board Revolving Basket / 360°板式转篮



Item No.	Material	Surface Treatment	Specification D*W*H(mm)	Cabinet (mm)	CBM (1SET/M3)
型号	材质	表面处理	规格	柜体	体积
GS-360A	195	CP/NM/TH	710*H(565-790)	800	0.087

Iron 铁-195 Chrome 电镀-CP Nano plating 纳米干镀-NM powder coating:dark grey 碳灰-TH

## ■ Soft-stop Pantry Unit / 四开大怪物



Item No.	Material	Surface Treatment	Specification D*W*H(mm)	Cabinet(mm)	CBM(1SET/M3)
型号	材质	表面处理	规格	柜体	体积
TLM-904	195/201	CP/EL/NM/TH	780*530*(1320-1620)	900	0.14
TLM-905	195/201	CP/EL/NM/TH	780*530*(1620-1920)	900	0.181
TLM-906	195/201	CP/EL/NM/TH	780*530*(1920-2220)	900	0.209

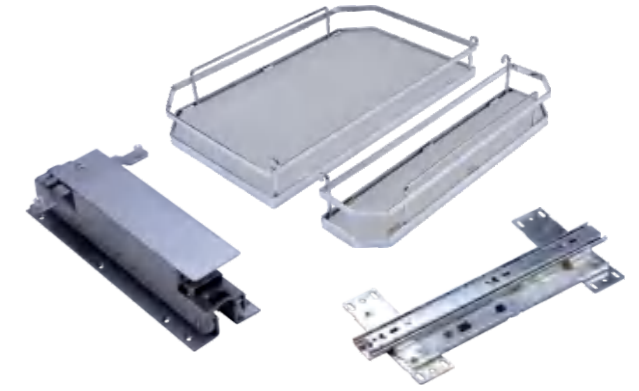
## ■ Soft-stop Tandem Pantry Unit / 双开中怪物



Item No.	Material	Surface Treatment	Specification D*W*H(mm)	Cabinet(mm)	CBM(1SET/M3)
型号	材质	表面处理	规格	柜体	体积
TGM-904	195/201	CP/EL/NM/TH	795*530*(1320-1620)	900	0.122
TGM-905	195/201	CP/EL/NM/TH	795*530*(1620-1920)	900	0.152
TGM-906	195/201	CP/EL/NM/TH	795*530*(1920-2220)	900	0.182

Iron 铁-195 Stainless steel 不锈钢-201 Chrome 电镀-CP electrolysis 电解-EL  
Nano plating 纳米干镀-NM powder coating:dark grey 碳灰-TH

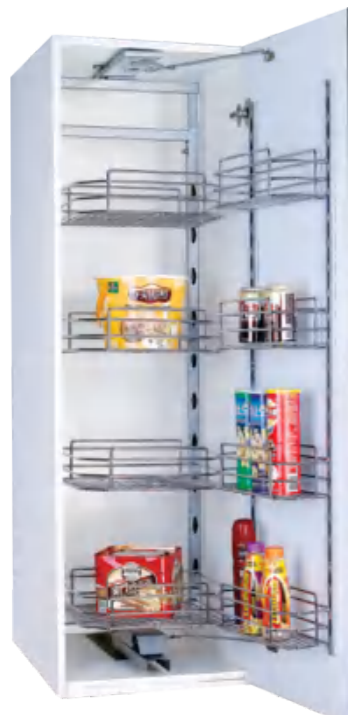
## ■ Soft-stop Tandam Board Pantry Unit / 板式双开中怪物



Item No.	Material	Surface Treatment	Specification D*W*H(mm)	Cabinet(mm)	CBM(1SET/M3)
型号	材质	表面处理	规格	柜体	体积
TGB-904	195	CP/NM/TH	795*530*(1320-1620)	900	0.122
TGB-905	195	CP/NM/TH	795*530*(1620-1920)	900	0.152
TGB-906	195	CP/NM/TH	795*530*(1920-2220)	900	0.182

Iron 铁-195 Chrome 电镀-CP Nano plating 纳米干镀-NM powder coating:dark grey 碳灰-TH

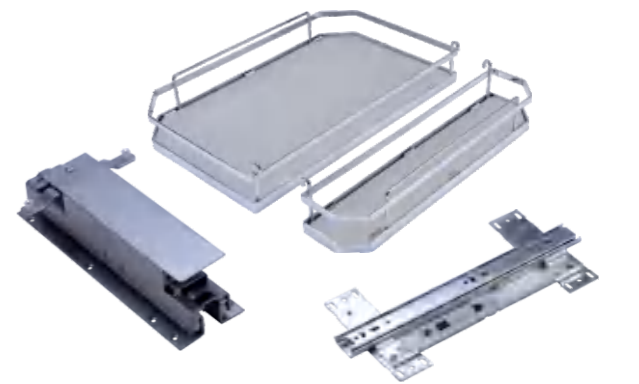
## ■ Soft-stop Half Tandem Pantry Unit / 中怪物



Item No.	Material	Surface Treatment	Specification D*W*H(mm)	Cabinet (mm)	CBM (1SET/M3)
型号	材质	表面处理	规格	柜体	体积
TGM-604	195/201	CP/EL/NM/TH	515*530*(1320-1620)	600	0.093
TGM-605	195/201	CP/EL/NM/TH	515*530*(1620-1920)	600	0.117
TGM-606	195/201	CP/EL/NM/TH	515*530*(1920-2220)	600	0.14
TGM-454	195/201	CP/EL/NM/TH	365*530*(1320-1620)	450	0.061
TGM-455	195/201	CP/EL/NM/TH	365*530*(1620-1920)	450	0.076
TGM-456	195/201	CP/EL/NM/TH	365*530*(1920-2220)	450	0.091

Iron 铁-195 Stainless steel 不锈钢-201 Chrome 电镀-CP electrolysis 电解-EL  
Nano plating 纳米干镀-NM powder coating:dark grey 碳灰-TH

## ■ Soft-stop Half Tandam Board Pantry Unit / 板式中怪物



Item No.	Material	Surface Treatment	Specification D*W*H(mm)	Cabinet(mm)	CBM(1SET/M3)
型号	材质	表面处理	规格	柜体	体积
TGB-604	195	CP/NM/TH	515*530*(1320-1620)	600	0.093
TGB-605	195	CP/NM/TH	515*530*(1620-1920)	600	0.117
TGB-606	195	CP/NM/TH	515*530*(1920-2220)	600	0.14
TGB-454	195	CP/NM/TH	365*530*(1320-1620)	450	0.061
TGB-455	195	CP/NM/TH	365*530*(1620-1920)	450	0.076
TGB-456	195	CP/NM/TH	365*530*(1920-2220)	450	0.091

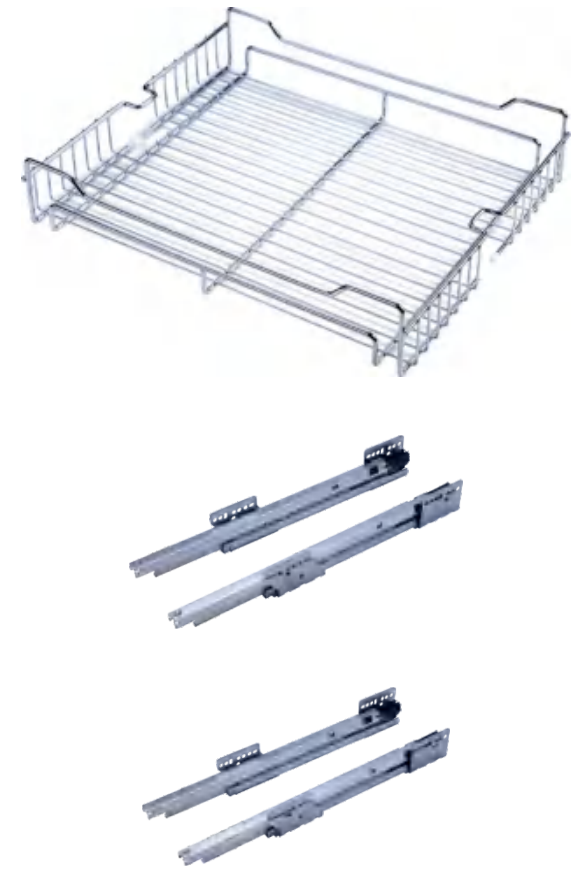
Iron 铁-195 Chrome 电镀-CP Nano plating 纳米干镀-NM powder coating:dark grey 碳灰-TH

■ Tall Unit Basket / 重型导轨高深篮



Item No.	Material	Surface Treatment	Specification D*W*H(mm)	Cabinet (mm)	CBM (1SET/M3)
型号	材质	表面处理	规格	柜体	体积
TDM-304	195/201	CP/EL/NM/TH	505*240*(1220-1520)	300	0.085
TDM-305	195/201	CP/EL/NM/TH	505*240*(1520-1850)	300	0.098
TDM-306	195/201	CP/EL/NM/TH	505*240*(1920-2250)	300	0.105
TDM-404	195/201	CP/EL/NM/TH	505*345*(1220-1520)	400	0.086
TDM-405	195/201	CP/EL/NM/TH	505*345*(1520-1850)	400	0.1
TDM-406	195/201	CP/EL/NM/TH	505*345*(1920-2250)	400	0.118
TDM-454	195/201	CP/EL/NM/TH	505*395*(1220-1520)	450	0.087
TDM-455	195/201	CP/EL/NM/TH	505*395*(1520-1850)	450	0.11
TDM-456	195/201	CP/EL/NM/TH	505*395*(1920-2250)	450	0.12
TDM-504	195/201	CP/EL/NM/TH	505*445*(1220-1520)	500	0.101
TDM-505	195/201	CP/EL/NM/TH	505*445*(1520-1850)	500	0.125
TDM-506	195/201	CP/EL/NM/TH	505*445*(1920-2250)	500	0.139

■ Soft-stop GRASS Tall Unit basket / GRASS 高深篮 



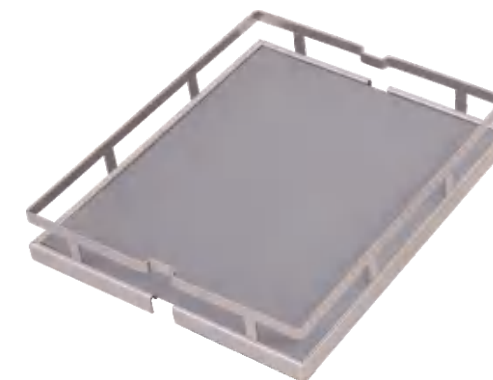
Item No.	Material	Surface Treatment	Specification D*W*H(mm)	Cabinet (mm)	CBM (1SET/M3)
型号	材质	表面处理	规格	柜体	体积
GDM-304	195/201	CP/EL/NM/TH	505*240*(1220-1550)	300	0.085
GDM-305	195/201	CP/EL/NM/TH	505*240*(1520-1850)	300	0.098
GDM-306	195/201	CP/EL/NM/TH	505*240*(1920-2250)	300	0.105
GDM-404	195/201	CP/EL/NM/TH	505*345*(1220-1550)	400	0.086
GDM-405	195/201	CP/EL/NM/TH	505*345*(1520-1850)	400	0.1
GDM-406	195/201	CP/EL/NM/TH	505*345*(1920-2250)	400	0.118
GDM-454	195/201	CP/EL/NM/TH	505*395*(1220-1550)	450	0.087
GDM-455	195/201	CP/EL/NM/TH	505*395*(1520-1850)	450	0.11
GDM-456	195/201	CP/EL/NM/TH	505*395*(1920-2250)	450	0.12
GDM-504	195/201	CP/EL/NM/TH	505*445*(1220-1550)	500	0.101
GDM-505	195/201	CP/EL/NM/TH	505*445*(1520-1850)	500	0.125
GDM-506	195/201	CP/EL/NM/TH	505*445*(1920-2250)	500	0.139

■ Soft-stop Tall unit Basket / 全拉出高深篮



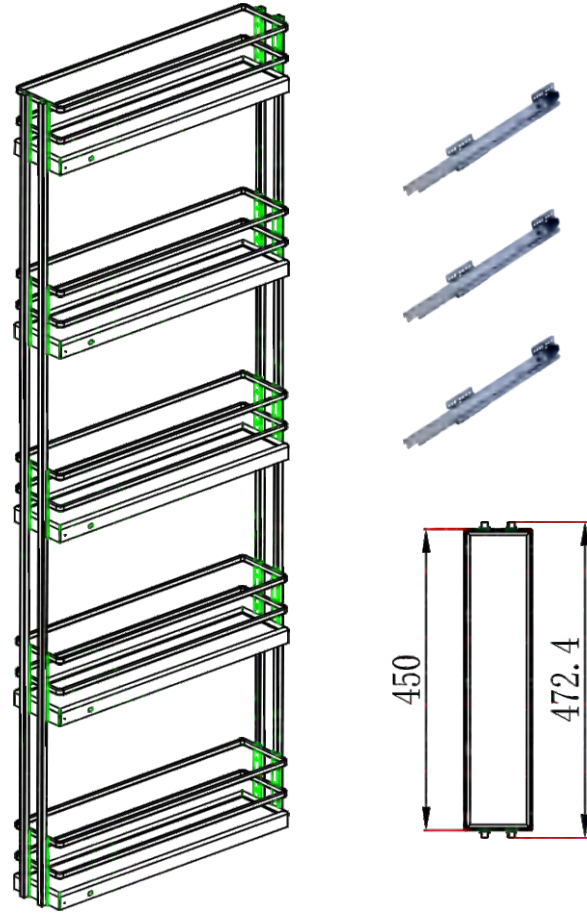
Item No.	Material	Surface Treatment	Specification D*W*H(mm)	Cabinet (mm)	CBM (1SET/M3)
型号	材质	表面处理	规格	柜体	体积
TTM-154	195/201	CP/EL/NM/TH	505*105*(1220-1570)	150	0.054
TTM-155	195/201	CP/EL/NM/TH	505*105*(1520-1870)	150	0.08
TTM-156	195/201	CP/EL/NM/TH	505*105*(1920-2270)	150	0.09
TTM-204	195/201	CP/EL/NM/TH	505*155*(1220-1570)	200	0.083
TTM-205	195/201	CP/EL/NM/TH	505*155*(1520-1870)	200	0.084
TTM-206	195/201	CP/EL/NM/TH	505*155*(1920-2270)	200	0.096
TTM-304	195/201	CP/EL/NM/TH	505*240*(1220-1570)	300	0.085
TTM-305	195/201	CP/EL/NM/TH	505*240*(1520-1870)	300	0.098
TTM-306	195/201	CP/EL/NM/TH	505*240*(1920-2270)	300	0.105
TTM-404	195/201	CP/EL/NM/TH	505*345*(1220-1570)	400	0.086
TTM-405	195/201	CP/EL/NM/TH	505*345*(1520-1870)	400	0.1
TTM-406	195/201	CP/EL/NM/TH	505*345*(1920-2270)	400	0.118
TTM-454	195/201	CP/EL/NM/TH	505*395*(1220-1570)	450	0.087
TTM-455	195/201	CP/EL/NM/TH	505*395*(1520-1870)	450	0.11
TTM-456	195/201	CP/EL/NM/TH	505*395*(1920-2270)	450	0.12

■ Soft-stop Metal Plate Tall Unit Basket / 阻尼板式高深拉篮



Item No.	Material	Surface Treatment	Specification D*W*H(mm)	Cabinet (mm)	CBM (1SET/M3)
型号	材质	表面处理	规格	柜体	体积
GVM-154	195	NM/TH	505*105*(1220-1570)	150	0.034
GVM-155	195	NM/TH	505*105*(1520-1870)	150	0.08
GVM-156	195	NM/TH	505*105*(1920-2270)	150	0.09
GVM-204	195	NM/TH	505*105*(1220-1570)	200	0.083
GVM-205	195	NM/TH	505*105*(1520-1870)	200	0.084
GVM-206	195	NM/TH	505*105*(1920-2270)	200	0.096
GVM-304	195	NM/TH	505*240*(1220-1570)	300	0.085
GVM-305	195	NM/TH	505*240*(1520-1870)	300	0.098
GVM-306	195	NM/TH	505*240*(1920-2270)	300	0.105
GVM-404	195	NM/TH	505*345*(1220-1570)	400	0.086
GVM-405	195	NM/TH	505*345*(1520-1870)	400	0.1
GVM-406	195	NM/TH	505*345*(1920-2270)	400	0.118
GVM-454	195	NM/TH	505*395*(1220-1570)	450	0.087
GVM-455	195	NM/TH	505*395*(1520-1870)	450	0.11
GVM-456	195	NM/TH	505*395*(1920-2270)	450	0.12

■ Soft-stop SIDE Tall unit Basket / 侧拉出高深篮



Item No.	Material	Surface Treatment	Specification D*W*H(mm)	Cabinet (mm)	CBM (1SET/M3)
型号	材质	表面处理	规格	柜体	体积
TVM-154G	195/201	NM/TH	505*105*(1220-1500)	150	0.034
TVM-155G	195/201	NM/TH	505*105*(1520-1820)	150	0.08
TVM-156G	195/201	NM/TH	505*105*(1920-2220)	150	0.09
TVM-204G	195/201	NM/TH	505*105*(1220-1500)	200	0.083
TVM-205G	195/201	NM/TH	505*105*(1520-1820)	200	0.084

■ Soft Close complete knock down side pull out basket / 侧装阻尼轨拆装式拉篮



Item No.	Material	Surface Treatment	Specification D*W*H(mm)	Cabinet (mm)	CBM (1SET/M3)
型号	材质	表面处理	规格	柜体	体积
TVH-200G	195	NM/TH	465*135*490	200	0.034
TVH-150G	195	NM/TH	465*105*490	150	0.025

Iron 铁-195 Nano plating 纳米干镀-NM powder coating:dark grey 碳灰-TH

■ Soft Close complete knock down Side pull out basket / 侧装阻尼轨拆装式拉篮



Item No.	Material	Surface Treatment	Specification D*W*H(mm)	Cabinet (mm)	CBM (1SET/M3)
型号	材质	表面处理	规格	柜体	体积
TVH-500G	195	NM/TH	465*485*490	500	0.122
TVH-450G	195	NM/TH	465*385*490	450	0.097
TVH-400G	195	NM/TH	465*335*490	400	0.087
TVH-350G	195	NM/TH	465*285*490	350	0.0764
TVH-300G	195	NM/TH	465*235*490	300	0.066
TVH-250G	195	NM/TH	465*185*490	250	0.054

■ Soft close metal plate basket / 阻尼轨板式拉篮



Item No.	Material	Surface Treatment	Specification D*W*H(mm)	Cabinet (mm)	CBM (1SET/M3)
型号	材质	表面处理	规格	柜体	体积
TVF-900	195	NM/TH	450*865*150	900	0.056
TVF-800	195	NM/TH	450*765*150	800	0.056
TVF-700	195	NM/TH	450*665*150	700	0.049
TVF-600	195	NM/TH	450*565*150	600	0.041
TVF-500	195	NM/TH	450*465*150	500	
TVF-450	195	NM/TH	450*415*150	450	0.034
TVF-400	195	NM/TH	450*365*150	400	0.026

Iron 铁-195 Nano plating 纳米干镀-NM powder coating:dark grey 碳灰-TH

■ Soft close metal plate pull out basket / 阻尼轨两层板式拉篮



Item No.	Material	Surface Treatment	Specification D*W*H(mm)	Cabinet (mm)	CBM (1SET/M3)
型号	材质	表面处理	规格	柜体	体积
TVH-450D	195	NM/TH	465*385*490	450	0.097
TVH-400D	195	NM/TH	465*335*490	400	0.087
TVH-350D	195	NM/TH	465*285*490	350	0.0764
TVH-300D	195	NM/TH	465*235*490	300	0.066
TVH-250D	195	NM/TH	465*185*490	250	0.054
TVH-200D	195	NM/TH	465*135*490	200	0.0424
TVH-150D	195	NM/TH	465*105*490	150	0.03

Iron 铁-195 Nano plating 纳米干镀-NM powder coating:dark grey 碳灰-TH

■ Soft close complete knock down 3 layers basket / 阻尼轨拆装式三层拉篮



Item No.	Material	Surface Treatment	Specification D*W*H(mm)	Cabinet (mm)	CBM (1SET/M3)
型号	材质	表面处理	规格	柜体	体积
TVH-450G3	195	NM/TH	465*385*520	450	0.101
TVH-400G3	195	NM/TH	465*335*520	400	0.088
TVH-350G3	195	NM/TH	465*285*520	350	0.075
TVH-300G3	195	NM/TH	465*235*520	300	0.062
TVH-250G3	195	NM/TH	465*185*520	250	0.049
TVH-200G3	195	NM/TH	465*135*520	200	0.036
TVH-150G3	195	NM/TH	465*105*520	150	0.023

Iron 铁-195 Nano plating 纳米干镀-NM powder coating:dark grey 碳灰-TH

■ Soft close metal plate 3 layers basket / 阻尼轨三层板式拉篮



Item No.	Material	Surface Treatment	Specification D*W*H(mm)	Cabinet (mm)	CBM (1SET/M3)
型号	材质	表面处理	规格	柜体	体积
TVH-450A	195	NM/TH	465*385*520	450	0.101
TVH-400A	195	NM/TH	465*335*520	400	0.088
TVH-350A	195	NM/TH	465*285*520	350	0.075
TVH-300A	195	NM/TH	465*235*520	300	0.062

Iron 铁-195 Nano plating 纳米干镀-NM powder coating:dark grey 碳灰-TH

## Multi-purpose Basket / 多功能篮



Item No.	Material	Surface Treatment	Specification D*W*H(mm)	Cabinet(mm)	CBM(1SET/m <sup>3</sup> )	Slide
型号	材质	表面处理	规格	柜体	体积	导轨
TOT-400A	195/201/304	CP/EL/NM/TH	450*350*465	400	0.082	soft close阻尼轨
TOT-350A	195/201/304	CP/EL/NM/TH	450*300*465	350	0.067	soft close阻尼轨
TOT-350A	195/201/304	CP/EL/NM/TH	450*250*465	300	0.056	soft close阻尼轨
TDM-400A	195/201/304	CP/EL/NM/TH	450*300*480	400	0.082	Normal slide 普通三节轨
TDM-350A	195/201/304	CP/EL/NM/TH	450*300*480	350	0.071	Normal slide 普通三节轨
TDM-300A	195/201/304	CP/EL/NM/TH	450*250*480	300	0.06	Normal slide 普通三节轨

Iron 铁-195 Stainless steel 不锈钢-201/304 Chrome 电镀-CP electrolysis 电解-EL Nano plating 纳米干镀-NM powder coating:dark grey 碳灰-TH

## Multi-purpose Basket / 多功能篮



Item No.	Material	Surface Treatment	Specification D*W*H(mm)	Cabinet(mm)	CBM(1SET/m <sup>3</sup> )	Slide
型号	材质	表面处理	规格	柜体	体积	导轨
TOT-400B	195/201/304	CP/EL/NM/TH	450*350*435	400	0.077	soft close阻尼轨
TOT-350B	195/201/304	CP/EL/NM/TH	450*300*435	350	0.067	soft close阻尼轨
TOT-300B	195/201/304	CP/EL/NM/TH	450*250*435	300	0.056	soft close阻尼轨
TDM-400B	195/201/304	CP/EL/NM/TH	450*345*450	400	0.077	Normal slide 普通三节轨
TDM-350B	195/201/304	CP/EL/NM/TH	450*300*450	350	0.067	Normal slide 普通三节轨
TDM-300B	195/201/304	CP/EL/NM/TH	450*250*450	300	0.056	Normal slide 普通三节轨

Iron 铁-195 Stainless steel 不锈钢-201/304 Chrome 电镀-CP electrolysis 电解-EL Nano plating 纳米干镀-NM powder coating:dark grey 碳灰-TH



Item No.	Material	Surface Treatment	Specification D*W*H(mm)	Cabinet(mm)	CBM(1SET/m <sup>3</sup> )	Slide
型号	材质	表面处理	规格	柜体	体积	导轨
TOB-400A	195/201/304	CP/EL/NM/TH	435*350*465	400	0.082	soft close阻尼轨
TOB-350A	195/201/304	CP/EL/NM/TH	435*300*465	350	0.067	soft close阻尼轨
TOB-350A	195/201/304	CP/EL/NM/TH	435*250*465	300	0.056	soft close阻尼轨
TKM-400A	195/201/304	CP/EL/NM/TH	435*350*480	400	0.082	Normal slide 普通三节轨
TKM-350A	195/201/304	CP/EL/NM/TH	435*300*480	350	0.071	Normal slide 普通三节轨
TKM-300A	195/201/304	CP/EL/NM/TH	435*250*480	300	0.06	Normal slide 普通三节轨



Item No.	Material	Surface Treatment	Specification D*W*H(mm)	Cabinet(mm)	CBM(1SET/m <sup>3</sup> )	Slide
型号	材质	表面处理	规格	柜体	体积	导轨
TOB-400B	195/201/304	CP/EL/NM/TH	435*350*435	400	0.077	soft close阻尼轨
TOB-350B	195/201/304	CP/EL/NM/TH	435*300*435	350	0.067	soft close阻尼轨
TOB-300B	195/201/304	CP/EL/NM/TH	435*250*435	300	0.056	soft close阻尼轨
TKM-400B	195/201/304	CP/EL/NM/TH	435*345*450	400	0.077	Normal slide 普通三节轨
TKM-350B	195/201/304	CP/EL/NM/TH	435*300*450	350	0.067	Normal slide 普通三节轨
TKM-300B	195/201/304	CP/EL/NM/TH	435*250*450	300	0.56	Normal slide 普通三节轨

## ■ Soft-stop Multi-purpose Basket / 多功能组合篮



Item No.	Material	Surface Treatment	Specification D*W*H(mm)	Cabinet(mm)	CBM(1SET/m <sup>3</sup> )
型号	材质	表面处理	规格	柜体	体积
TOT-400N	195/201/304	CP/EL/NM/TH	450*350*595	400	0.103

Iron 铁-195 Stainless steel 不锈钢-201/304 Chrome 电镀-CP electrolysis 电解-EL Nano plating 纳米干镀-NM powder coating:dark grey 碳灰-TH

## ■ Multi-purpose Basket / 多功能篮



Item No.	Material	Surface Treatment	Specification D*W*H(mm)	Cabinet(mm)	CBM(1SET/m <sup>3</sup> )	Slide
型号	材质	表面处理	规格	柜体	体积	导轨
TOB-200B	195/201/304	CP/EL/NM/TH	435*150*435	200	0.035	soft close 阻尼轨
TKB-200B	195/201/304	CP/EL/NM/TH	435*150*450	200	0.037	Normal slide 普通轨

Iron 铁-195 Stainless steel 不锈钢-201/304 Chrome 电镀-CP electrolysis 电解-EL Nano plating 纳米干镀-NM powder coating:dark grey 碳灰-TH

## ■ Multi-purpose Basket / 多功能篮



Item No.	Material	Surface Treatment	Specification D*W*H(mm)	Cabinet(mm)	CBM(1SET/m <sup>3</sup> )	Slide
型号	材质	表面处理	规格	柜体	体积	导轨
TOT-200B	195/201/304	CP/EL/NM/TH	450*150*435	200	0.035	soft close 阻尼轨
TDM-200B	195/201/304	CP/EL/NM/TH	450*150*450	200	0.037	Normal slide 普通轨

## ■ Soft-stop Multifunctional Basket / 多功能拉篮



Item No.	Material	Surface Treatment	Specification D*W*H(mm)	Cabinet(mm)	CBM(1SET/M3)
型号	材质	表面处理	规格	柜体	体积
TOT-400H	195/201/304	CP/EL/NM/TH	457*338*490	400	0.086
TOT-350H	195/201/304	CP/EL/NM/TH	457*300*490	350	0.074
TOT-300H	195/201/304	CP/EL/NM/TH	457*245*490	300	0.0623

## ■ Multi-purpose Basket / 多功能篮



Item No.	Material	Surface Treatment	Specification D*W*H(mm)	Cabinet(mm)	CBM(1SET/M3)
型号	材质	表面处理	规格	柜体	体积
TOT-400D	195/201/304	CP/EL/NM/TH	450*350*435	400	0.088

Iron 铁-195 Stainless steel 不锈钢-201/304 Chrome 电镀-CP electrolysis 电解-EL Nano plating 纳米干镀-NM powder coating:dark grey 碳灰-TH

## ■ Multi-purpose Basket / 多功能篮



Item No.	Material	Surface Treatment	Specification D*W*H(mm)	Cabinet(mm)	CBM(1SET/M3)
型号	材质	表面处理	规格	柜体	体积
TOT-450B	195/201/304	CP/EL/NM/TH	450*400*435	450	0.088

Iron 铁-195 Stainless steel 不锈钢-201/304 Chrome 电镀-CP electrolysis 电解-EL Nano plating 纳米干镀-NM powder coating:dark grey 碳灰-TH



Item No.	Material	Surface Treatment	Specification D*W*H(mm)	Cabinet(mm)	CBM(1SET/M3)
型号	材质	表面处理	规格	柜体	体积
TOB-400D	195/201/304	CP/EL/NM/TH	435*350*435	400	0.088

Iron 铁-195 Stainless steel 不锈钢-201/304 Chrome 电镀-CP electrolysis 电解-EL Nano plating 纳米干镀-NM powder coating:dark grey 碳灰-TH

## ■ Soft-stop Multi-purpose Square Wire Basket / 方线多功能调味篮



Item No.	Material	Surface Treatment	Specification D*W*H(mm)	Cabinet(mm)	CBM(1SET/m³)
型号	材质	表面处理	规格	柜体	体积
TOT-400S	195/201/304	CP/EL/NM/TH	450*350*510	400	0.094

Iron 铁-195 Stainless steel 不锈钢-201/304 Chrome 电镀-CP electrolysis 电解-EL Nano plating 纳米干镀-NM powder coating:dark grey 碳灰-TH

## ■ Soft-stop Simple Board Basket / 阻尼板式双层简易篮



Item No.	Material	Surface Treatment	Specification D*W*H(mm)	Cabinet(mm)	CBM(1SET/m <sup>3</sup> )
型号	材质	表面处理	规格	柜体	体积
GBH-200	195/201/304	CP/EL/NM/TH	475x150x535	200	0.042
GBH-300	195/201/304	CP/EL/NM/TH	475x250x535	300	0.069
GBH-400	195/201/304	CP/EL/NM/TH	475x350x535	400	0.096

Iron 铁-195 Stainless steel 不锈钢-201/304 Chrome 电镀-CP electrolysis 电解-EL Nano plating 纳米干镀-NM powder coating:dark grey 碳灰-TH

## ■ Pull out Bread Basket / 面包篮



Item No.	Material	Surface Treatment	Specification D*W*H(mm)	Cabinet(mm)	CBM(1SET/m <sup>3</sup> )
型号	材质	表面处理	规格	柜体	体积
TOM-300E	195/201/304	CP/EL/NM/TH	450x250x525	300	0.061
TOM-400E	195/201/304	CP/EL/NM/TH	450x350x525	400	0.084

## ■ Simple Basket / 简易篮



Item No.	Material	Surface Treatment	Specification D*W*H(mm)	Cabinet(mm)	CBM(1SET/m <sup>3</sup> )	Slide
型号	材质	表面处理	规格	柜体	体积	导轨
TOT-400C	195/201/304	CP/EL/NM/TH	450*350*495	400	0.087	soft close 阻尼轨
TOT-300C	195/201/304	CP/EL/NM/TH	450*250*495	300	0.063	soft close 阻尼轨
TDH-400C	195/201/304	CP/EL/NM/TH	450*350*510	400	0.087	Normal slide 普通三节轨
TDH-300C	195/201/304	CP/EL/NM/TH	450*250*510	300	0.063	Normal slide 普通三节轨

Iron 铁-195 Stainless steel 不锈钢-201/304 Chrome 电镀-CP electrolysis 电解-EL Nano plating 纳米干镀-NM powder coating:dark grey 碳灰-TH



Item No.	Material	Surface Treatment	Specification D*W*H(mm)	Cabinet(mm)	CBM(1SET/m <sup>3</sup> )
型号	材质	表面处理	规格	柜体	体积
TOT-400M-S	195/201/304	CP/EL/NM/TH	47*36.5*48	400	0.0823
TOT-350M-S	195/201/304	CP/EL/NM/TH	47*31.5*48	350	0.071

# Simple Basket / 简易篮



Item No.	Material	Surface Treatment	Specification D*W*H(mm)	Cabinet(mm)	CBM(1SET/m <sup>3</sup> )	Slide
型号	材质	表面处理	规格	柜体	体积	导轨
TOH-400A	195/201	CP/EL/NM/TH	450*350*520	400	0.092	soft close阻尼轨
TOH-350A	195/201	CP/EL/NM/TH	450*300*520	350	0.08	soft close阻尼轨
TOH-300A	195/201	CP/EL/NM/TH	450*255*500	300	0.066	soft close阻尼轨
TDH-400A	195/201	CP/EL/NM/TH	450*350*535	400	0.092	Normal slide普通三节轨
TDH-350A	195/201	CP/EL/NM/TH	450*300*535	350	0.08	Normal slide普通三节轨
TDH-300A	195/201	CP/EL/NM/TH	450*250*515	300	0.066	Normal slide普通三节轨

Iron 铁-195 Stainless steel 不锈钢-201 Chrome 电镀-CP electrolysis 电解-EL Nano plating 纳米干镀-NM powder coating:dark grey 碳灰-TH



Item No.	Material	Surface Treatment	Specification D*W*H(mm)	Cabinet(mm)	CBM(1SET/m <sup>3</sup> )	Slide
型号	材质	表面处理	规格	柜体	体积	导轨
TOM-400A	195/201	CP/EL/NM/TH	435*350*520	400	0.092	soft close阻尼轨
TOM-350A	195/201	CP/EL/NM/TH	435*300*520	350	0.08	soft close阻尼轨
TOM-300A	195/201	CP/EL/NM/TH	435*255*520	300	0.066	soft close阻尼轨
TKH-400A	195/201	CP/EL/NM/TH	435*350*515	400	0.093	Normal slide普通三节轨
TKH-350A	195/201	CP/EL/NM/TH	435*300*515	350	0.08	Normal slide普通三节轨
TKH-300A	195/201	CP/EL/NM/TH	435*250*515	300	0.066	Normal slide普通三节轨

# Simple Basket / 简易篮



Item No.	Material	Surface Treatment	Specification D*W*H(mm)	Cabinet(mm)	CBM(1SET/m <sup>3</sup> )	Slide
型号	材质	表面处理	规格	柜体	体积	导轨
TOH-500A-2	195/201	CP/EL/NM/TH	490*440*505	500	0.126	soft close阻尼轨
TOH-400A-2	195/201	CP/EL/NM/TH	490*340*505	400	0.099	soft close阻尼轨
TOH-350A-2	195/201	CP/EL/NM/TH	490*290*505	350	0.085	soft close阻尼轨
TOH-300A-2	195/201	CP/EL/NM/TH	490*240*505	300	0.072	soft close阻尼轨
TOH-200A-2	195/201	CP/EL/NM/TH	490*105*505	200	0.045	soft close阻尼轨
TOH-150A-2	195/201	CP/EL/NM/TH	490*440*505	150	0.031	soft close阻尼轨
TDH-500A-2	195/201	CP/EL/NM/TH	490*440*520	500	0.126	Normal slide普通三节轨
TDH-400A-2	195/201	CP/EL/NM/TH	490*340*520	400	0.099	Normal slide普通三节轨
TDH-350A-2	195/201	CP/EL/NM/TH	490*290*520	350	0.085	Normal slide普通三节轨
TDH-300A-2	195/201	CP/EL/NM/TH	490*240*520	300	0.072	Normal slide普通三节轨
TDH-200A-2	195/201	CP/EL/NM/TH	490*150*520	200	0.045	Normal slide普通三节轨
TDH-150A-2	195/201	CP/EL/NM/TH	490*105*520	200	0.031	Normal slide普通三节轨

Iron 铁-195 Stainless steel 不锈钢-201 Chrome 电镀-CP electrolysis 电解-EL Nano plating 纳米干镀-NM powder coating:dark grey 碳灰-TH



Item No.	Material	Surface Treatment	Specification D*W*H(mm)	Cabinet(mm)	CBM(1SET/m <sup>3</sup> )	Slide
型号	材质	表面处理	规格	柜体	体积	导轨
TOM-500A-2	195/201	CP/EL/NM/TH	475*440*505	500	0.126	soft close阻尼轨
TOM-400A-2	195/201	CP/EL/NM/TH	475*340*505	400	0.099	soft close阻尼轨
TOM-350A-2	195/201	CP/EL/NM/TH	475*290*505	350	0.085	soft close阻尼轨
TOM-300A-2	195/201	CP/EL/NM/TH	475*240*505	300	0.072	soft close阻尼轨
TOM-200A-2	195/201	CP/EL/NM/TH	475*105*505	200	0.045	soft close阻尼轨
TOM-150A-2	195/201	CP/EL/NM/TH	475*440*505	150	0.031	soft close阻尼轨
TKM-500A-2	195/201	CP/EL/NM/TH	475*440*520	500	0.126	Normal slide普通三节轨
TKM-400A-2	195/201	CP/EL/NM/TH	475*340*520	400	0.099	Normal slide普通三节轨
TKM-350A-2	195/201	CP/EL/NM/TH	475*290*520	350	0.085	Normal slide普通三节轨
TKM-300A-2	195/201	CP/EL/NM/TH	475*240*520	300	0.072	Normal slide普通三节轨
TKM-200A-2	195/201	CP/EL/NM/TH	475*105*520	200	0.045	Normal slide普通三节轨
TKM-150A-2	195/201	CP/EL/NM/TH	475*440*520	150	0.031	Normal slide普通三节轨

## ■ Simple Basket / 简易篮



Item No.	Material	Surface Treatment	Specification D*W*H(mm)	Cabinet (mm)	CBM (1SET/m <sup>3</sup> )	Slide
型号	材质	表面处理	规格	柜体	体积	导轨
TOH-200C	195/201	CP/EL/NM/TH	450*150*475	200	0.038	soft close 阻尼轨
TOH-150C	195/201	CP/EL/NM/TH	450*105*475	150	0.028	soft close 阻尼轨
TDH-200C	195/201	CP/EL/NM/TH	450*150*490	200	0.038	Normal slide 普通三节轨
TDH-150C	195/201	CP/EL/NM/TH	450*105*490	150	0.028	Normal slide 普通三节轨

Iron 铁-195 Stainless steel 不锈钢-201 Chrome 电镀-CP electrolysis 电解-EL  
Nano plating 纳米干镀-NM powder coating:dark grey 碳灰-TH



Item No.	Material	Surface Treatment	Specification D*W*H(mm)	Cabinet (mm)	CBM (1SET/m <sup>3</sup> )	Slide
型号	材质	表面处理	规格	柜体	体积	导轨
TOM-200C	195/201	CP/EL/NM/TH	435*155*475	200	0.038	soft close 阻尼轨
TOM-150C	195/201	CP/EL/NM/TH	435*105*475	150	0.028	soft close 阻尼轨
TKH-200C	195/201	CP/EL/NM/TH	435*150*490	200	0.038	Normal slide 普通三节轨
TKH-150C	195/201	CP/EL/NM/TH	435*105*490	150	0.028	Normal slide 普通三节轨

Iron 铁-195 Stainless steel 不锈钢-201 Chrome 电镀-CP electrolysis 电解-EL  
Nano plating 纳米干镀-NM powder coating:dark grey 碳灰-TH



Item No.	Material	Surface Treatment	Specification D*W*H(mm)	Cabinet (mm)	CBM (1SET/m <sup>3</sup> )	Slide
型号	材质	表面处理	规格	柜体	体积	导轨
TOH-300B	195/201	CP/EL/NM/TH	450*255*540	300	0.056	soft close 阻尼轨
TOH-150B	195/201	CP/EL/NM/TH	450*105*535	150	0.029	soft close 阻尼轨
TDH-300B	195/201	CP/EL/NM/TH	450*250*540	300	0.056	Normal slide 普通三节轨
TDH-150B	195/201	CP/EL/NM/TH	450*105*535	150	0.029	Normal slide 普通三节轨

Iron 铁-195 Stainless steel 不锈钢-201 Chrome 电镀-CP electrolysis 电解-EL  
Nano plating 纳米干镀-NM powder coating:dark grey 碳灰-TH

## ■ Four-side Basket / 四边篮



Item No.	Material	Surface Treatment	Specification D*W*H(mm)	Cabinet (mm)	CBM (1SET/m <sup>3</sup> )	Slide
型号	材质	表面处理	规格	柜体	体积	导轨
TOT-900E	195/201/304	CP/EL/NM/TH	440*865*130	900	0.081	soft close 阻尼轨
TOT-800E	195/201/304	CP/EL/NM/TH	440*765*130	800	0.071	soft close 阻尼轨
TOT-720E	195/201/304	CP/EL/NM/TH	440*685*130	720	0.063	soft close 阻尼轨
TOT-700E	195/201/304	CP/EL/NM/TH	440*665*130	700	0.061	soft close 阻尼轨
TOT-600E	195/201/304	CP/EL/NM/TH	440*565*130	600	0.051	soft close 阻尼轨
TOT-900F	195/201/304	CP/EL/NM/TH	440*865*130	900	0.081	soft close 阻尼轨
TOT-800F	195/201/304	CP/EL/NM/TH	440*765*130	800	0.071	soft close 阻尼轨
TOT-720F	195/201/304	CP/EL/NM/TH	440*685*130	720	0.063	soft close 阻尼轨
TOT-700F	195/201/304	CP/EL/NM/TH	440*665*130	700	0.061	soft close 阻尼轨
TOT-600F	195/201/304	CP/EL/NM/TH	440*565*130	600	0.051	soft close 阻尼轨
TOT-500F	195/201/304	CP/EL/NM/TH	440*465*130	500	0.041	soft close 阻尼轨
TOT-450F	195/201/304	CP/EL/NM/TH	440*415*130	450	0.036	soft close 阻尼轨
TOT-400F	195/201/304	CP/EL/NM/TH	440*365*130	400	0.031	soft close 阻尼轨
TDE-900B	195/201/304	CP/EL/NM/TH	440*865*130	900	0.081	Normal slide 普通轨
TDE-800B	195/201/304	CP/EL/NM/TH	440*765*130	800	0.071	Normal slide 普通轨
TDE-720B	195/201/304	CP/EL/NM/TH	440*685*130	720	0.063	Normal slide 普通轨
TDE-700B	195/201/304	CP/EL/NM/TH	440*665*130	700	0.061	Normal slide 普通轨
TDE-600B	195/201/304	CP/EL/NM/TH	440*565*130	600	0.051	Normal slide 普通轨
TDF-900B	195/201/304	CP/EL/NM/TH	440*865*130	900	0.081	Normal slide 普通轨
TDF-800B	195/201/304	CP/EL/NM/TH	440*765*130	800	0.071	Normal slide 普通轨
TDF-720B	195/201/304	CP/EL/NM/TH	440*685*130	720	0.063	Normal slide 普通轨
TDF-700B	195/201/304	CP/EL/NM/TH	440*665*130	700	0.061	Normal slide 普通轨
TDF-600B	195/201/304	CP/EL/NM/TH	440*565*130	600	0.051	Normal slide 普通轨
TDF-500B	195/201/304	CP/EL/NM/TH	440*465*130	500	0.041	Normal slide 普通轨
TDF-450B	195/201/304	CP/EL/NM/TH	440*415*130	450	0.036	Normal slide 普通轨
TDF-400B	195/201/304	CP/EL/NM/TH	440*365*130	400	0.031	Normal slide 普通轨

■ Soft-stop Four-side Square Wire Basket / 方线四边碗碟拉篮



Item No.	Specification(mm) D*W*H	Cabinet(mm)
型号	规格	柜体
DTC-900B4-(304/201)F	465×865×150	900
DTC-800B4-(304/201)F	465×765×150	800
DTC-700B4-(304/201)F	465×665×150	700
DTC-600B4-(304/201)F	465×565×150	600

Stainless steel 不锈钢-201/304

■ Soft-stop Four-side Basket / 四边碗碟拉篮



Item No.	Material	Surface Treatment	Specification D*W*H(mm)	Cabinet (mm)	CBM (1SET/M3)
型号	材质	表面处理	规格	柜体	体积
DTC-900C4	195/201/304	CP/EL/NM/TH	465*865*150	900	0.09
DTC-800C4	195/201/304	CP/EL/NM/TH	465*765*150	800	0.083
DTC-700C4	195/201/304	CP/EL/NM/TH	465*665*150	700	0.076
DTC-600C4	195/201/304	CP/EL/NM/TH	465*565*150	600	0.069

Iron 铁-195 Stainless steel 不锈钢-201/304 Chrome 电镀-CP electrolysis 电解-EL Nano plating 纳米干镀-NM powder coating:dark grey 碳灰-TH

■ Soft-stop Four-side Square Wire Basket / 方线四边碗碟拉篮



Item No.	Specification(mm) D*W*H	Cabinet(mm)
型号	规格	柜体
DTC-900C4-(304/201)F	465×865×150	900
DTC-800C4-(304/201)F	465×765×150	800
DTC-700C4-(304/201)F	465×665×150	700
DTC-600C4-(304/201)F	465×565×150	600

■ Soft-stop Four-side Basket / 四边碗碟拉篮



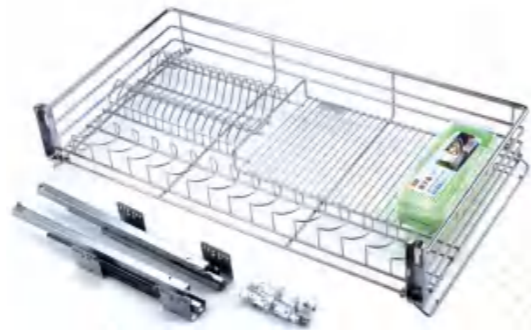
Item No.	Material	Surface Treatment	Specification D*W*H(mm)	Cabinet (mm)	CBM (1SET/M3)
型号	材质	表面处理	规格	柜体	体积
DTC-900D4	195/201/304	CP/EL/NM/TH	465*865*150	900	0.09
DTC-800D4	195/201/304	CP/EL/NM/TH	465*765*150	800	0.083
DTC-700D4	195/201/304	CP/EL/NM/TH	465*665*150	700	0.076
DTC-600D4	195/201/304	CP/EL/NM/TH	465*565*150	600	0.069
DTC-500D4	195/201/304	CP/EL/NM/TH	465*465*150	500	0.062
DTC-400D4	195/201/304	CP/EL/NM/TH	465*365*150	400	0.055

## ■ Soft-stop Three-side Basket / 阻尼轨三边篮



Item No.	Material	Surface Treatment	Specification D*W*H(mm)	Cabinet(mm)	CBM(1SET/M3)
型号	材质	表面处理	规格	柜体	体积
TDS-900F	195/201	CP/EL/NM/TH	440*865*150	900	0.057
TDS-800F	195/201	CP/EL/NM/TH	440*765*150	800	0.051
TDS-750F	195/201	CP/EL/NM/TH	440*735*150	750	0.048
TDS-720F	195/201	CP/EL/NM/TH	440*705*150	720	0.045
TDS-700F	195/201	CP/EL/NM/TH	440*665*150	700	0.044
TDS-600F	195/201	CP/EL/NM/TH	440*565*150	600	0.037

Iron 铁-195 Stainless steel 不锈钢-201 Chrome 电镀-CP electrolysis 电解-EL Nano plating 纳米干镀-NM powder coating:dark grey 碳灰-TH



Item No.	Material	Surface Treatment	Specification D*W*H(mm)	Cabinet(mm)	CBM(1SET/M3)
型号	材质	表面处理	规格	柜体	体积
TDS-900E	195/201	CP/EL/NM/TH	440*865*150	900	0.057
TDS-800E	195/201	CP/EL/NM/TH	440*765*150	800	0.051
TDS-750E	195/201	CP/EL/NM/TH	440*735*150	750	0.048
TDS-720E	195/201	CP/EL/NM/TH	440*705*150	720	0.045
TDS-700E	195/201	CP/EL/NM/TH	440*665*150	700	0.044

## ■ Soft-stop Three-side Basket / 三边碗碟拉篮



Item No.	Material	Surface Treatment	Specification D*W*H(mm)	Cabinet (mm)	CBM (1SET/M3)
型号	材质	表面处理	规格	柜体	体积
DTC-900B3	195/201/304	CP/EL/NM/TH	465*865*150	900	0.09
DTC-800B3	195/201/304	CP/EL/NM/TH	465*765*150	800	0.083
DTC-700B3	195/201/304	CP/EL/NM/TH	465*665*150	700	0.076
DTC-600B3	195/201/304	CP/EL/NM/TH	465*565*150	600	0.069

Iron 铁-195 Stainless steel 不锈钢-201/304 Chrome 电镀-CP electrolysis 电解-EL Nano plating 纳米干镀-NM powder coating:dark grey 碳灰-TH

## ■ Soft-stop Three-side Basket / 三边碗碟拉篮



Item No.	Material	Surface Treatment	Specification D*W*H(mm)	Cabinet (mm)	CBM (1SET/M3)
型号	材质	表面处理	规格	柜体	体积
DTC-900D3	195/201/304	CP/EL/NM/TH	465*865*150	900	0.09
DTC-800D3	195/201/304	CP/EL/NM/TH	465*765*150	800	0.083
DTC-700D3	195/201/304	CP/EL/NM/TH	465*665*150	700	0.076
DTC-600D3	195/201/304	CP/EL/NM/TH	465*565*150	600	0.069
DTC-500D3	195/201/304	CP/EL/NM/TH	465*465*150	500	0.062
DTC-400D3	195/201/304	CP/EL/NM/TH	465*365*150	400	0.055

## ■ Soft-stop Three-side Basket / 三边碗碟拉篮



Item No.	Material	Surface Treatment	Specification D*W*H(mm)	Cabinet (mm)	CBM (1SET/M3)
型号	材质	表面处理	规格	柜体	体积
DTC-900C3	195/201/304	CP/EL/NM/TH	465*865*150	900	0.09
DTC-800C3	195/201/304	CP/EL/NM/TH	465*765*150	800	0.083
DTC-700C3	195/201/304	CP/EL/NM/TH	465*665*150	700	0.076
DTC-600C3	195/201/304	CP/EL/NM/TH	465*565*150	600	0.069

Iron 铁-195 Stainless steel 不锈钢-201/304 Chrome 电镀-CP electrolysis 电解-EL Nano plating 纳米干镀-NM powder coating:dark grey 碳灰-TH

## ■ Soft-stop Three-side Basket / 阻尼三边碗碟拉篮



Item No.	Material	Surface Treatment	Specification D*W*H(mm)	Cabinet(mm)	CBM(1SET/M3)
型号	材质	表面处理	规格	柜体	体积
TDS-900	195/201	CP/EL/NM/TH	440*865*165	900	0.067
TDS-800	195/201	CP/EL/NM/TH	440*765*165	800	0.059
TDS-700	195/201	CP/EL/NM/TH	440*665*165	700	0.051
TDS-600	195/201	CP/EL/NM/TH	440*565*165	600	0.043

## ■ Soft-stop Three-side Square Wire Basket / 阻尼轨方线三边碗碟篮



Item No.	Material	Surface Treatment	Specification D*W*H(mm)	Cabinet(mm)	CBM(1SET/M3)
型号	材质	表面处理	规格	柜体	体积
TDS-900A	195/201	CP/EL/NM/TH	440*865*170	900	0.066
TDS-800A	195/201	CP/EL/NM/TH	440*765*170	800	0.058
TDS-700A	195/201	CP/EL/NM/TH	440*665*170	700	0.05
TDS-600A	195/201	CP/EL/NM/TH	440*565*170	600	0.042

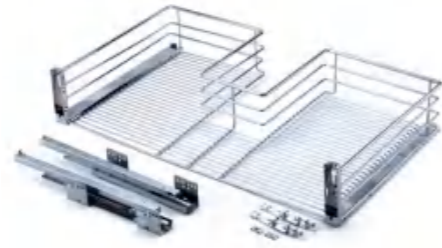
Iron 铁-195 Stainless steel 不锈钢-201 Chrome 电镀-CP electrolysis 电解-EL Nano plating 纳米干镀-NM powder coating:dark grey 碳灰-TH

## ■ Soft-stop Trough Basket / 阻尼轨水槽篮



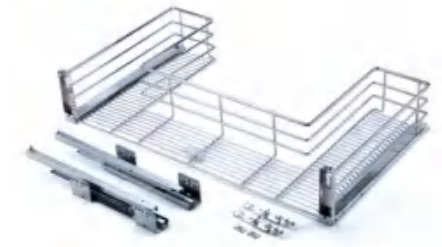
Item No.	Material	Surface Treatment	Specification D*W*H(mm)	Cabinet (mm)	CBM (1SET/m³)
型号	材质	表面处理	规格	柜体	体积
TOT-350G	195/201	CP/EL/NM/TH	450*280*360	350	0.039

## ■ Soft-stop Trough Basket / 阻尼轨水槽篮



Item No.	Material	Surface Treatment	Specification D*W*H(mm)	Cabinet (mm)	CBM (1SET/m <sup>3</sup> )
型号	材质	表面处理	规格	柜体	体积
TOT-1000A	195/201	CP/EL/NM/TH	470*965*150	1000	0.135
TOT-900A	195/201	CP/EL/NM/TH	470*865*150	900	0.119

Iron 铁-195 Stainless steel 不锈钢-201 Chrome 电镀-CP electrolysis 电解-EL  
Nano plating 纳米干镀-NM powder coating:dark grey 碳灰-TH



Item No.	Material	Surface Treatment	Specification D*W*H(mm)	Cabinet (mm)	CBM (1SET/m <sup>3</sup> )
型号	材质	表面处理	规格	柜体	体积
TOT-1000G	195/201	CP/EL/NM/TH	470*965*150	1000	0.135
TOT-900G	195/201	CP/EL/NM/TH	470*865*150	900	0.119

Iron 铁-195 Stainless steel 不锈钢-201 Chrome 电镀-CP electrolysis 电解-EL  
Nano plating 纳米干镀-NM powder coating:dark grey 碳灰-TH

## ■ Normal Slide Trough Basket / 普通三节轨水槽篮



Item No.	Material	Surface Treatment	Specification D*W*H(mm)	Cabinet (mm)	CBM (1SET/M3)
型号	材质	表面处理	规格	柜体	体积
TDF-900U	195/201/304	CP/EL/NM/TH	460*865*130	900	0.084

Iron 铁-195 Stainless steel 不锈钢-201 Chrome 电镀-CP electrolysis 电解-EL Nano plating 纳米干镀-NM powder coating:dark grey 碳灰-TH

## ■ Normal Side Pull Out Basket / 普通三节轨侧式拉篮



Item No.	Material	Surface Treatment	Specification D*W*H(mm)	Cabinet (mm)	CBM (1SET/M3)
型号	材质	表面处理	规格	柜体	体积
TDP-150A	195/201	CP/EL/NM/TH	440*105*435	150	0.024
TDP-200A	195/201	CP/EL/NM/TH	440*150*435	200	0.033
TDP-300A	195/201	CP/EL/NM/TH	440*245*430	300	0.059

Iron 铁-195 Stainless steel 不锈钢-201 Chrome 电镀-CP electrolysis 电解-EL Nano plating 纳米干镀-NM powder coating:dark grey 碳灰-TH

## ■ 普通三节轨侧式拉篮 / TDP-300B

## ■ 三节轨拆装式立式拉篮 / TDP-300BM



Item No.	Material	Surface Treatment	Specification D*W*H(mm)	Cabinet (mm)	CBM (1SET/M3)
型号	材质	表面处理	规格	柜体	体积
TDP-300B	195/201	CP/EL/NM/TH	475*245*430	300	0.025
TDP-300BM	195/201	CP/EL/NM/TH	420*190*305	300	0.011

Iron 铁-195 Stainless steel 不锈钢-201 Chrome 电镀-CP electrolysis 电解-EL Nano plating 纳米干镀-NM powder coating:dark grey 碳灰-TH

## ■ Normal Pull Out Basket / 普通三节轨拉篮



Item No.	Material	Surface Treatment	Specification D*W*H(mm)	Cabinet(mm)	CBM(1SET/M3)
型号	材质	表面处理	规格	柜体	体积
TDP-300E	195/201	CP/EL/NM/TH	460*250*415	300	0.052

Iron 铁-195 Stainless steel 不锈钢-201 Chrome 电镀-CP electrolysis 电解-EL Nano plating 纳米干镀-NM powder coating:dark grey 碳灰-TH

## ■ Soft close side pull out basket / 阻尼轨侧式拉篮



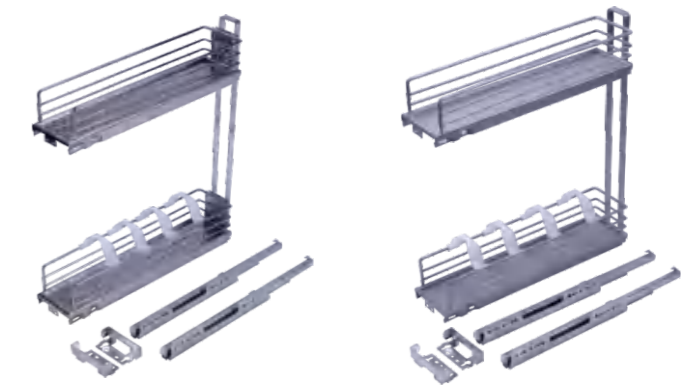
Item No.	Material	Surface Treatment	Specification D*W*H(mm)	Cabinet(mm)	CBM(1SET/M3)
型号	材质	表面处理	规格	柜体	体积
TDP-200B(L/R)	195/201/304	CP/EL/NM/TH	450*150*535	200	0.037
TDP-150B(L/R)	195/201/304	CP/EL/NM/TH	450*100*535	150	0.025

Iron 铁-195 Stainless steel 不锈钢-201/304 Chrome 电镀-CP electrolysis 电解-EL Nano plating 纳米干镀-NM powder coating:dark grey 碳灰-TH

## ■ Normal Side Pull Out Basket / 普通三节轨侧式拉篮



Item No.	Material	Surface Treatment	Specification D*W*H(mm)	Cabinet(mm)	CBM(1SET/M3)
型号	材质	表面处理	规格	柜体	体积
TDP-200D	195/201	CP/EL/NM/TH	480*150*545	200	0.028
TDP-250D	195/201	CP/EL/NM/TH	480*200*545	250	0.028
TDP-300D	195/201	CP/EL/NM/TH	480*250*545	300	0.034



Item No.	Material	Surface Treatment	Specification D*W*H(mm)	Cabinet(mm)	CBM(1SET/M3)
型号	材质	表面处理	规格	柜体	体积
TOT-150A	195	CP	470*110*500	150	0.01
TOT-150B	195	TH	470*110*500	150	0.027

## ■ Upright Lift Fitting / 正上移门铰



Item No.	Material	Surface Treatment	Specification D*W*H(mm)	Cabinet (mm)	CBM (1SET/M3)
型号	材质	表面处理	规格	柜体	体积
TLS-001A	195	TH	600-800	600-800	0.071
TLS-001B	195	TH	800-1000	800-1000	0.101
TLS-001A1 soft	195	TH	600-800	600-800	0.078
TLS-001B1 soft	195	TH	800-1000	800-1000	0.108

Iron 铁-195 powder coating:dark grey 碳灰-TH

## ■ Soft Close Upright Lift Fitting / 阻尼正上移门铰



Item No.	Material	Surface Treatment	Specification D*W*H(mm)	Cabinet (mm)	CBM(1SET/M3)
型号	材质	表面处理	规格	柜体	体积
TLS-001E	195	TH	600-800	600-800	0.065
TLS-001F	195	TH	800-1000	800-1000	0.065

Iron 铁-195 powder coating:dark grey 碳灰-TH

## ■ Soft Close Incined Lift Fitting / 阻尼斜上移门铰



Item No.	Material	Surface Treatment	Specification D*W*H(mm)	Cabinet (mm)	CBM (1SET/M3)
型号	材质	表面处理	规格	柜体	体积
TLS-001C	195	TH	600-800	600-800	0.121
TLS-001D	195	TH	800-1000	800-1000	0.151
TLS-001C1 soft	195	TH	600-800	600-800	0.128
TLS-001D1 soft	195	TH	800-1000	800-1000	0.158

Iron 铁-195 powder coating:dark grey 碳灰-TH



Item No.	Material	Surface Treatment	Specification D*W*H(mm)	Cabinet(mm)	CBM(1SET/M3)
型号	材质	表面处理	规格	柜体	体积
TLS-002E	195	TH	600-800	600-800	0.05
TLS-002F	195	TH	800-1000	800-1000	0.05

Iron 铁-195 powder coating:dark grey 碳灰-TH

## ■ Swivel Fittings / 升降台铰



Item No.	Material	Surface Treatment	Cabinet (mm)	CBM (1SET/M3)
型号	材质	表面处理	柜体	体积
TT-001	195	TH	600-900	0.01

## ■ Accessory for cabinet / 美式橱柜配件



T4 塑三角



T5 隔板销

快装件



T6 直片

T7 弯片

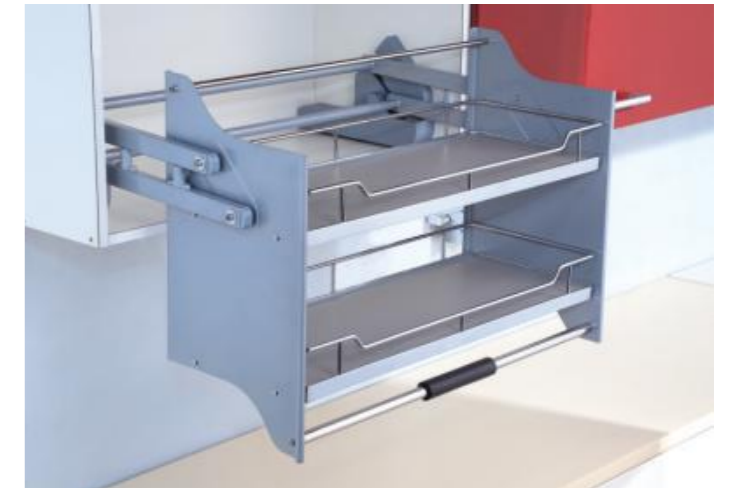
## ■ Pull down wire basket / 升降篮



Item No.	Material	Surface Treatment	Specification D*W*H(mm)	Cabinet(mm)	CBM(1SET/M3)
型号	材质	表面处理	规格	柜体	体积
TT-002-600	195/201/304	CP/EL/NM/TH	565*280*605	600	0.104
TT-002-700	195/201/304	CP/EL/NM/TH	665*280*605	700	0.121
TT-002-800	195/201/304	CP/EL/NM/TH	765*280*605	800	0.139
TT-002-900	195/201/304	CP/EL/NM/TH	865*280*605	900	0.159

Iron 铁-195 Stainless steel 不锈钢-201/304 Chrome 电镀-CP electrolysis 电解-EL Nano plating 纳米干镀-NM powder coating:dark grey 碳灰-TH

## ■ Pull down anti-slip board basket / 板式防滑垫升降篮



Item No.	Material	Surface Treatment	Specification D*W*H(mm)	Cabinet(mm)	CBM(1SET/M3)
型号	材质	表面处理	规格	柜体	体积
TT-002A-600	195	CP/NM/TH	565*280*605	600	0.104
TT-002A-700	195	CP/NM/TH	665*280*605	700	0.121
TT-002A-800	195	CP/NM/TH	765*280*605	800	0.139
TT-002A-900	195	CP/NM/TH	865*280*605	900	0.159

## ■ S.S Draining Racks-HJ / 不锈钢碗碟架HJ

Item No.	Material	Surface Treatment	Specification D*W*H(mm)	Cabinet (mm)	CBM (1SET/M3)
型号	材质	表面处理	规格	柜体	体积
TH-1000HJ	201/304	CP/EL/NM/TH	965*280*65	1000	0.0365
TH-900HJ	201/304	CP/EL/NM/TH	865*280*65	900	0.0323
TH-800HJ	201/304	CP/EL/NM/TH	765*280*65	800	0.029
TH-700HJ	201/304	CP/EL/NM/TH	665*280*65	700	0.025
TH-600HJ	201/304	CP/EL/NM/TH	565*280*65	600	0.021

Stainless steel 不锈钢-201/304 Chrome 电镀-CP electrolysis 电解-EL  
Nano plating 纳米干镀-NM powder coating:dark grey 碳灰-TH



## ■ Desk-Type Basket / 台式碗碟篮



Item No.	Material	Surface Treatment	Specification D*W*H(mm)
型号	材质	表面处理	规格
TH-401	201/304	CP/EL/NM/TH	430*290*230

Stainless steel 不锈钢-201/304 Chrome 电镀-CP electrolysis 电解-EL  
Nano plating 纳米干镀-NM powder coating:dark grey 碳灰-TH

## ■ S.S Draining Racks -C / 不锈钢碗碟架C

Item No.	Material	Surface Treatment	Specification D*W*H(mm)	Cabinet (mm)	CBM (1SET/M3)				
型号	材质	表面处理	规格	柜体	体积				
TH-1000C	201/304	CP	280*965*65	1000	0.112				
TH-900C	201/304	CP	280*865*65	900	0.102				
TH-800C	201/304	CP	280*765*65	800	0.091				
TH-700C	201/304	CP	280*665*65	700	0.08				
TH-600C	201/304	CP	280*565*65	600	0.069				
TH-500C	201/304	CP	280*465*65	500	TH-400C	201/304	CP	280*365*65	400
TH-400C	201/304	CP	280*365*65	400					

Stainless steel 不锈钢-201/304 Chrome 电镀-CP



Item No.	Material	Surface Treatment	Specification D*W*H(mm)
型号	材质	表面处理	规格
TH-402	201/304	TH	L59*W25*H40C

Stainless steel 不锈钢-201/304 powder coating:dark grey 碳灰-TH

## ■ S.S Draining Racks -EF / 不锈钢碗碟架EF

Item No.	Material	Surface Treatment	Specification D*W*H(mm)	Cabinet (mm)	CBM (1SET/M3)
型号	材质	表面处理	规格	柜体	体积
TH-1000EF	201/304	CP/EL/NM/TH	965*280*230	1000	0.0365
TH-900EF	201/304	CP/EL/NM/TH	865*280*230	900	0.0323
TH-800EF	201/304	CP/EL/NM/TH	765*280*230	800	0.029
TH-700EF	201/304	CP/EL/NM/TH	665*280*230	700	0.025
TH-600EF	201/304	CP/EL/NM/TH	565*280*230	600	0.021



Item No.	Material	Surface Treatment	Specification D*W*H(mm)	CBM (1SET/M3)
型号	材质	表面处理	规格	体积
TH-1000B	201/304	TH	L94*W28*H53C	0.216
TH-900B	201/304	TH	L84*W28*H53	0.194
TH-600B	201/304	TH	L64*W28*H53	0.15

Stainless steel 不锈钢-201/304 powder coating:black 黑砂-TH

## Simple Racks / 挂件



Item No.	Material	Surface Treatment	Specification D*W*H(mm)	CBM (10SET/m <sup>3</sup> )
型号	材质	表面处理	规格	体积
TH101	195/201/304	CP	340*320*275	0.065



Item No.	Material	Surface Treatment	Specification D*W*H(mm)	CBM (8SET/m <sup>3</sup> )
型号	材质	表面处理	规格	体积
TH103	195/201/304	CP	150*250*400	0.083



Item No.	Material	Surface Treatment	Specification D*W*H(mm)	CBM (10SET/m <sup>3</sup> )
型号	材质	表面处理	规格	体积
TH104	195/201/304	CP	152*325*180	0.037



Item No.	Material	Surface Treatment	Specification D*W*H(mm)	CBM (6SET/m <sup>3</sup> )
型号	材质	表面处理	规格	体积
TH207	195/201/304	CP	160*350*320	0.07



Item No.	Material	Surface Treatment	Specification D*W*H(mm)	CBM (10SET/m <sup>3</sup> )
型号	材质	表面处理	规格	体积
TH222	195/201/304	CP	300*545*380	0.028



Item No.	Material	Surface Treatment	Specification D*W*H(mm)	CBM (2SET/m <sup>3</sup> )
型号	材质	表面处理	规格	体积
TH301	195/201/304	CP	405*210*620	0.06

## Simple Racks / 挂件



Item No.	Material	Surface Treatment	Specification D*W*H(mm)	CBM (6SET/m <sup>3</sup> )
型号	材质	表面处理	规格	体积
TH302	195/201/304	CP	160*330*325	0.06



Item No.	Material	Surface Treatment	Specification D*W*H(mm)	CBM (6SET/m <sup>3</sup> )
型号	材质	表面处理	规格	体积
TH303	195/201/304	CP	155*330*365	0.064

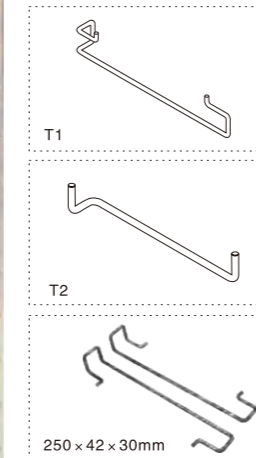


Item No.	Material	Surface Treatment	Specification D*W*H(mm)	CBM (6SET/m <sup>3</sup> )
型号	材质	表面处理	规格	体积
TH108	195/201/304	CP	225*400*325	0.058



Item No.	Material	Surface Treatment	Specification D*W*H(mm)	CBM (6SET/m <sup>3</sup> )
型号	材质	表面处理	规格	体积
TH202	195/201/304	CP	200*260*340	0.061

## Hanging Spice jar / 调味瓶

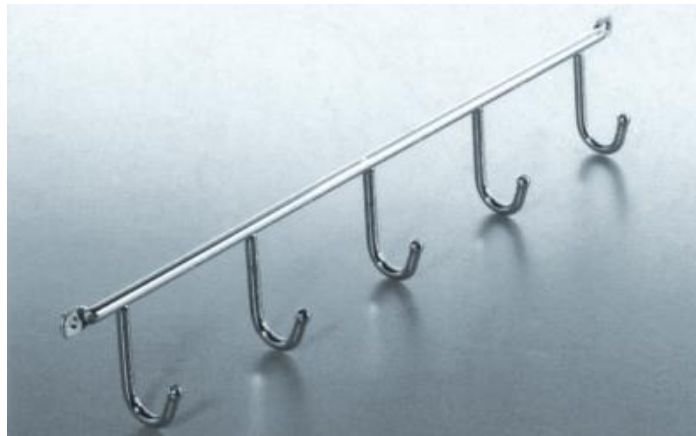


Item No.	Material	Surface Treatment	Specification D*W*H(mm)	CBM (10SET/m <sup>3</sup> )
型号	材质	表面处理	规格	体积
TH106	195	CP	330*175*Ø44	0.032

## Simple Racks / 挂件



Item No.	Material	Surface Treatment	Specification D*W*H(mm)	CBM (30SET/m <sup>3</sup> )
型号	材质	表面处理	规格	体积
TF002A	195	CP	420*54*40	0.02
TF002B	195	CP	420*104*40	0.022
TF002C	195	CP	420*160*40	0.028



Item No.	Material	Surface Treatment	CBM (100SET/m <sup>3</sup> )
型号	材质	表面处理	体积
TH501	201	CP	0.0315



Item No.	Material	Surface Treatment	Specification D*W*H(mm)	CBM (20SET/M <sup>3</sup> )
型号	材质	表面处理	规格	体积
TLS-005A	201	CP	∅16*600	0.0066
TLS-005B	201	CP	∅16*800	0.0087
TLS-005C	201	CP	∅16*1000	0.0109
TLS-005D	201	CP	∅16*1200	0.0131

## Simple Racks / 挂件



Item No.	Material	Surface Treatment	Specification D*W*H(mm)	CBM (10-20SET/m <sup>3</sup> )
型号	材质	表面处理	规格	体积
TH110A	195/201/304	CP	340*115*63	0.02
TH110B	195/201/304	CP	340*215*63	0.044
TH110C	195/201/304	CP	340*325*63	0.038
TH110D	195/201/304	CP	340*435*63	0.052



Item No.	Material	Surface Treatment	Specification D*W*H(mm)	Cabinet (mm)	CBM (1SET/m <sup>3</sup> )
型号	材质	表面处理	规格	柜体	体积
TH601	195/201/304	CP	900*300*305	900	0.08
TH602	195/201/304	CP	700*300*305	700	0.07

■ Soft-stop waste bin / 阻尼垃圾桶



Item No.	Sepecification D*W*H(mm)	Cabinet (mm)	CBM (1SET/m <sup>3</sup> )
型号	规格	柜体	体积
TLS-006S-30	460*350*320	400	0.049



Item No.	Sepecification D*W*H(mm)	Cabinet (mm)	CBM (1SET/m <sup>3</sup> )
型号	规格	柜体	体积
TLS-006C-30	460*295*360	400	0.054



Item No.	Sepecification D*W*H(mm)	Cabinet (mm)	CBM (1SET/m <sup>3</sup> )
型号	规格	柜体	体积
TLS-006C-15	460*230*360	300	0.039

■ Waste bin / 垃圾桶



Item No.	Sepecification D*W*H(mm)	Cabinet (mm)	CBM (1SET/m <sup>3</sup> )
型号	规格	柜体	体积
TLS-006A	320*250*390	300	0.033



Item No.	Sepecification D*W*H(mm)	Cabinet (mm)	CBM (1SET/m <sup>3</sup> )
型号	规格	柜体	体积
TLS-006B-30	505*345*365	400	0.045

# Waste bin / 垃圾桶



Item No.	Specification D*W*H(mm)	Cabinet (mm)	CBM (1SET/m <sup>3</sup> )
型号	规格	柜体	体积
TLS-006A-20	320*250*390	400	0.033



Item No.	Material	Surface Treatment	Specification D*W*H(mm)	Cabinet (mm)	CBM (1SET/M3)
型号	材质	表面处理	规格	柜体	体积
SA1	195	NM/TH	475*335*100	400	0.046
SA2	195	NM/TH	475*335*150		0.046
SA3	195	NM/TH	475*335*200		0.047
SB1	195	NM/TH	475*435*100	500	0.06
SB2	195	NM/TH	475*435*150		0.06
SB3	195	NM/TH	475*435*200		0.073
SC1	195	NM/TH	475*535*100	600	0.074
SC2	195	NM/TH	475*535*150		0.074
SC3	195	NM/TH	475*535*200		0.09
CA1	195	CP	475*335*100	400	0.046
CA2	195	CP	475*335*150		0.046
CA3	195	CP	475*335*120		0.057
CA4	195	CP	475*435*100	500	0.06
CA5	195	CP	475*435*150		0.06
CA6	195	CP	475*435*200		0.073
CA7	195	CP	475*535*100	600	0.074
CA8	195	CP	475*535*150		0.074
CA9	195	CP	475*535*200		0.09